



SX-435

GAMING IMAGE SCANNER



- * Ultra-High Speed
- * Optical Mark Recognition
- * High-speed USB 2.0 Interface
- * Full Access to the Scanning Track for Easy Maintenance
- * Scanned Slips with Stacker
- * Compact Ergonomic Design
- * Autofeed scan option
- * Comes with Diagnostic Software and SDK

Features

The state-of-the-art image processing technology of Witek's SX-435 single feed high speed A4 scanner is designed to be the most effective and competitive integral part of related industry.

Witek's unique recognition technology integrates Optical Mark Recognition in real-time to produce the most accurate slip read possible. SX-435 Scanner's 200dpi resolution provides you with the highest quality check image available today.

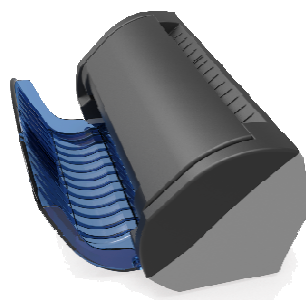
Desktop scanner SX-435 has an ergonomic design that makes it very convenient for the tellers. The slips pass through the scanner and are stacked in the stacker, which can be removed according to the user's preferences.

Easy and full access to the scanning track makes the routine maintenance and cleaning of the scanner very easy and user friendly.





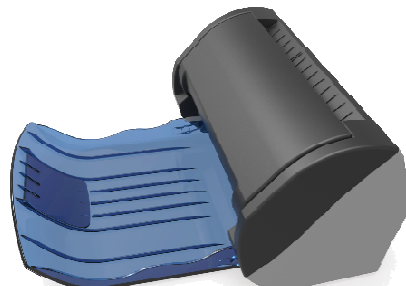
Short Tray



U shape Tray



Middle Tray(Development process)



Long Tray

Hardware

SPECIFICATIONS

Type:	Desktop Image Scanner	Greyscale	256-Level, 16-Level
Unit name:	SX-435	Interface	High-Speed USB 2.0, USB 1.1
Scan Size	A4 Single Contact Image Sensing	Scanning Speed	Max. 530mm/sec at B/W, 256 Gray
Paper path	Straight Through	Power	24DC / 2.7A
Scanning Size	210mm(w) x 297mm(h)	MTBF	Approx. 50,000 hours (CIS only)
Paper Thickness	0.1mm ~ 0.2mm	Weight	1.6 Kg
Scanning Element	Contact Image Sensor (CIS)	Dimensions(HxWxD)	
Scanning Resolution	200dpi	With Stacker:	150mm X 300mm X 330mm (With Stacker)
Scanning	Simplex: Grayscale, Black and White	Without Stacker:	150mm X 300mm X 150mm (Without Stacker)

* Optional 1" Thermal brander, U shape curved tray for smaller foot print

Contact Information

Witek System Inc. (South Korea)

3FL.Bum-A Bldg. 66-5 Yangjae-dong, Seocho-gu Seoul. South Korea

Tel: +82-2-2057-5960 Fax: +82-2-2057-4086

Witek Global(USA)

2470 Stearns St. #76 Simi Valley CA 93063 USA

Product specifications, size and shape are subject to change without notice and actual product appearance may differ from that depicted herein

